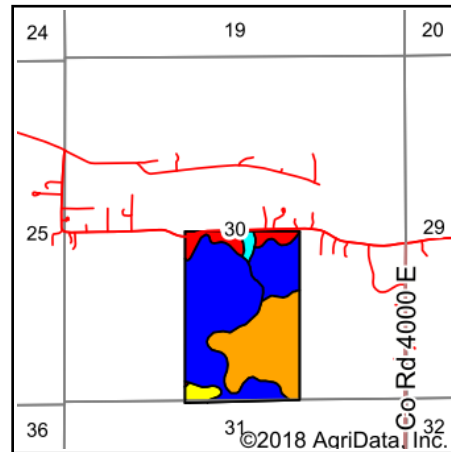
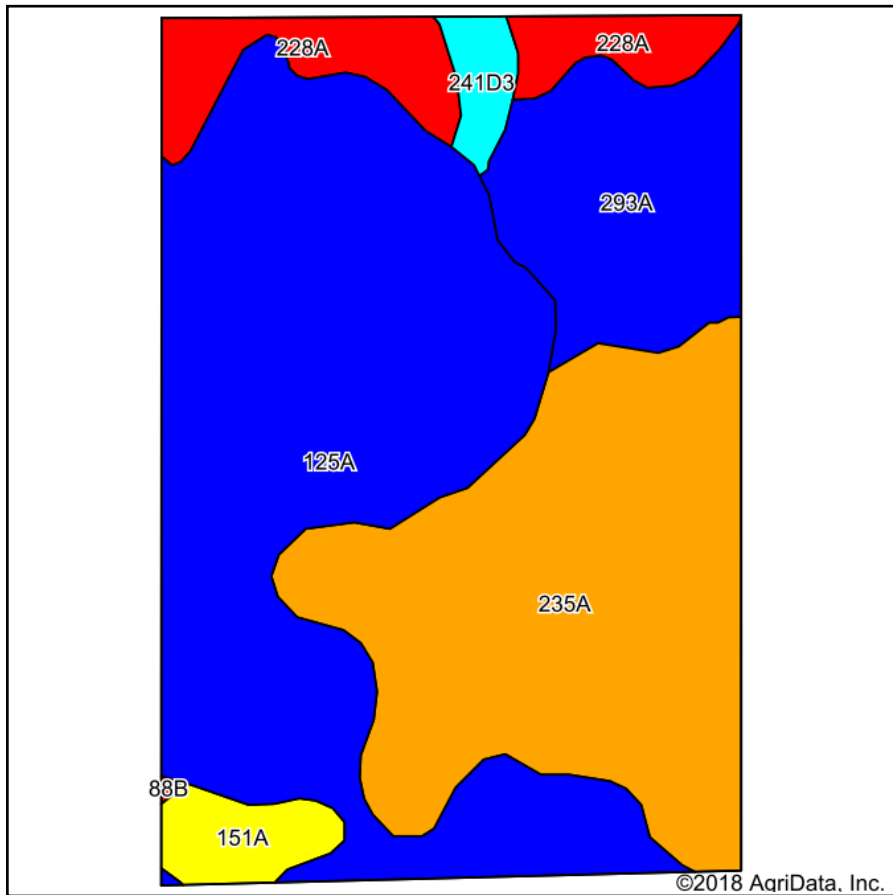


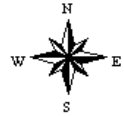
# Soils Map - 106.1 Acres







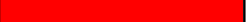


State: **Illinois**  
 County: **Grundy**  
 Location: **30-33N-8E**  
 Township: **Waupoosee**  
 Acres: **106.1**  
 Date: **2/13/2018**

**RO**  
 RICHARD A. OLSON  
 & ASSOCIATES, INC.  
 531 W. Bedford Road, Morris, IL 60450  
 Ph: 815-942-4269 Fax: 815-942-4654  
 www.richardaolson.com

Maps Provided By:  
  
 CUSTOMIZED ONLINE MAPPING  
 © AgriData, Inc. 2018 www.AgriDataInc.com



Area Symbol: IL063, Soil Area Version: 12

Code	Soil Description	Acres	Percent of field	Il. State Productivity Index Legend	Corn Bu/A	Soybeans Bu/A	Wheat Bu/A	Crop productivity index for optimum management
125A	Selma loam, 0 to 2 percent slopes	47.32	44.6%		176	57	70	129
235A	Bryce silty clay, 0 to 2 percent slopes	33.42	31.5%		162	54	64	121
293A	Andres silt loam, 0 to 2 percent slopes	13.10	12.3%		184	59	71	135
228A	Nappanee silt loam, 0 to 2 percent slopes	7.49	7.1%		115	41	45	89
151A	Ridgeville fine sandy loam, 0 to 2 percent slopes	2.93	2.8%		151	51	63	114
**241D3	Chatsworth silty clay, 6 to 12 percent slopes, severely eroded	1.77	1.7%		**75	**27	**27	**57
**88B	Sparta loamy fine sand, 1 to 6 percent slopes	0.07	0.1%		**118	**41	**50	**91
<b>Weighted Average</b>					<b>165.9</b>	<b>54.5</b>	<b>65.5</b>	<b>122.8</b>

**Table: Optimum Crop Productivity Ratings for Illinois Soil by K.R. Olson and J.M. Lang, Office of Research, ACES, University of Illinois at Champaign-Urbana.** Version: 1/2/2012 Amended Table S2 B811

Crop yields and productivity indices for optimum management (B811) are maintained at the following NRES web site: <http://soilproductivity.nres.illinois.edu/>

\*\* Indexes adjusted for slope and erosion according to Bulletin 811 Table S3

\*c: Using Capabilities Class Dominant Condition Aggregation Method

Soils data provided by USDA and NRCS. Soils data provided by University of Illinois at Champaign-Urbana.